



15,000 BLOCK OF ROCKWELL BLVD

FEE DEVELOPMENT OPPORTUNITY

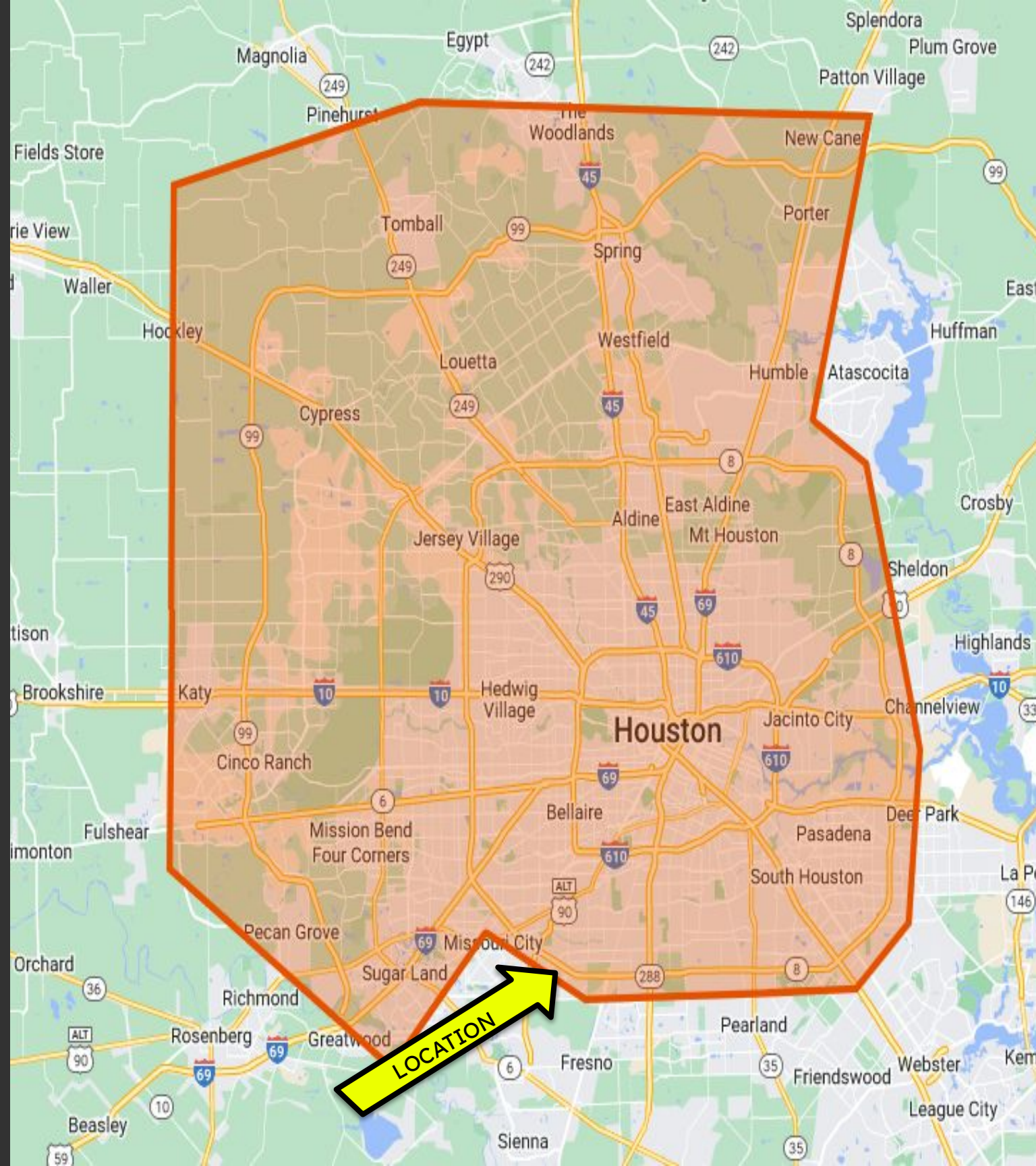
Julian R. Cortinas

Office: 832-206-7501 | cortinascre@gmail.com | www.cortinascre.com

4808 Gibson St 3rd Floor Houston, Tx 77007

LAND DETAILS

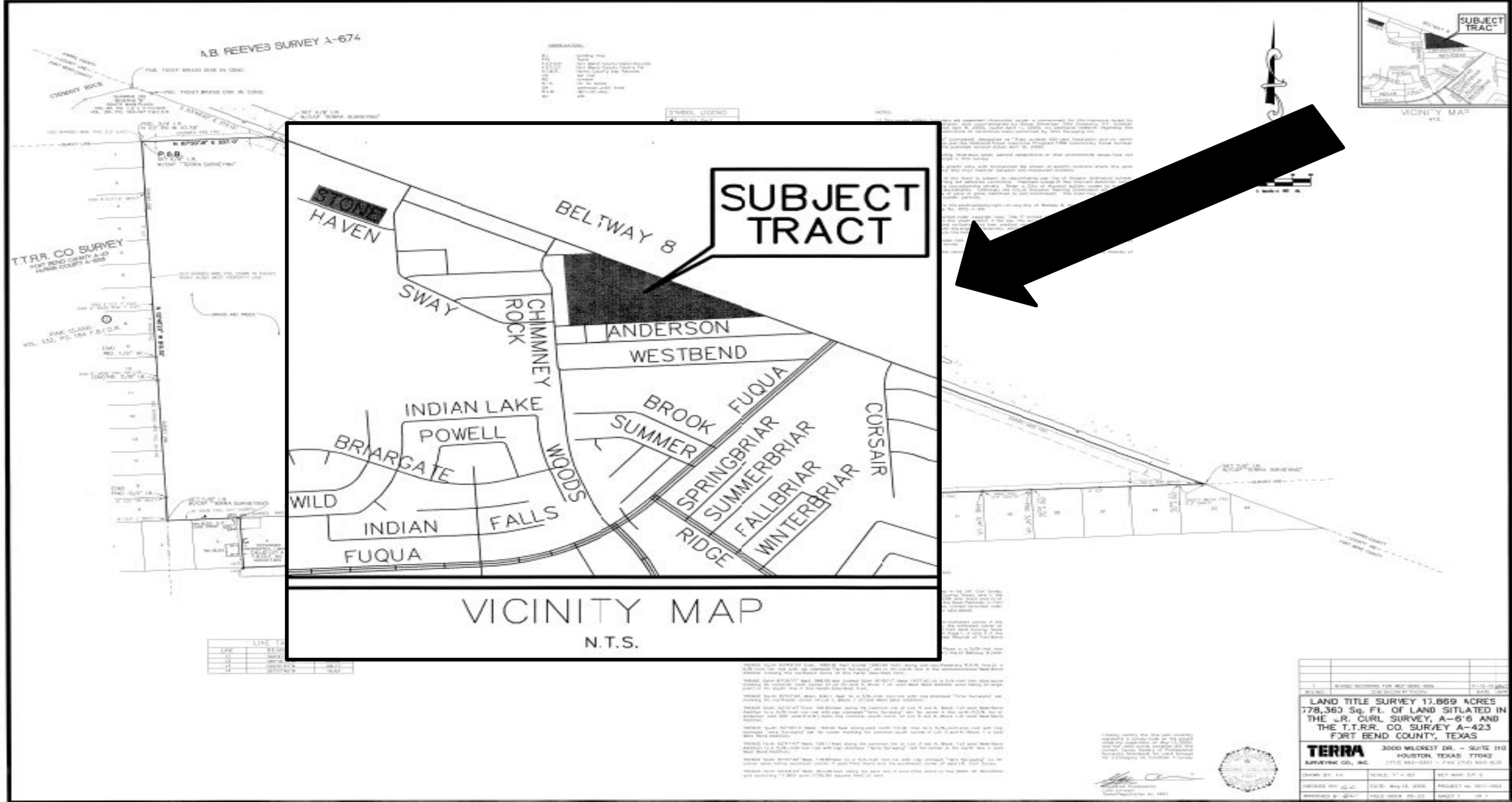
- ❖ 15,000 Block of Rockwell Blvd, Houston, TX 77085
- ❖ +/- 1,680' Fronting Sam Houston Tollway
- ❖ Latitude: 29°36'24.5"N
Longitude: 95°28'56.3"W
- ❖ +/-17.869 Acres Eastbound Frontage on Sam Houston Tollway
- ❖ Just West, of W. Fuqua Street
- ❖ SH 288 @ Sam Houston Tollway, Seven Minutes (6.2 Miles)
- ❖ SH 288 @ Loop 610, Twelve Minutes (11.9 Miles)
- ❖ SH 288 @ 45 South, Nineteen Minutes (16.5 Miles)



Julian R. Cortinas

Office: 832-206-7501 | cortinascre@gmail.com | www.cortinascre.com
4808 Gibson St 3rd Floor Houston, Tx 77007

PROPERTY SURVEY





Julian R. Cortinas

Office: 832-206-7501
cortinascre@gmail.com
www.cortinascre.com
4808 Gibson St 3rd Floor
Houston, Tx 77007

Links Below

INFORMATION ABOUT
BROKERAGE SERVICES

cortinascre.com

